
Preparing Students for the Twenty-first Century

Marianna Mirchuk

Regional Director, the Americas

Minerva Schools at KGI



MINERVA®

SAPIENTIA CRITICA
— ANNO MMXII —

2005



2013



65%

of today's grade school kids will end up in a job that hasn't been invented yet.

93%

of employers said a demonstrated capacity to think critically, communicate clearly and solve complex problems is more important than a job candidate's undergraduate degree.

Sources: US Department of Labor study;
2013 study by the Association of American Colleges and Universities

Top 10 Job Skills Needed in 2020

-
- 1. Complex problem solving**
 - 2. Critical thinking**
 - 3. Creativity**
 - 4. People management**
 - 5. Coordinating with others**
 - 6. Emotional intelligence**
 - 7. Judgment & decision making**
 - 8. Service orientation**
 - 9. Negotiation**
 - 10. Cognitive flexibility**

Source: 2016 *The Future of Jobs Report*, World Economic Forum





How can we educate the next generation of global leaders and innovators?

**Minerva is a reinvented
four-year undergraduate
degree program **deliberately
designed to teach students
the skills needed for success
in an uncertain future.****

A new approach for a new era:

practical knowledge
active learning
global experience
international accessibility



Learning practical knowledge.

Practical Competencies

Personal Skills



critical thinking

e.g., evaluating claims, weighing decisions

creative thinking

e.g., solving problems, developing new ideas

Interpersonal Skills



effective communication

e.g., writing, speaking, presenting

effective interaction

e.g., negotiating, working on teams

Habits of Mind



cognitive skills that become automatic with deliberate practice

e.g., Use of “plausibility checks” for claims, identifying audiences and tailoring messages accordingly, considering who stands to lose in decision making

Foundational Concepts



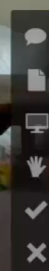
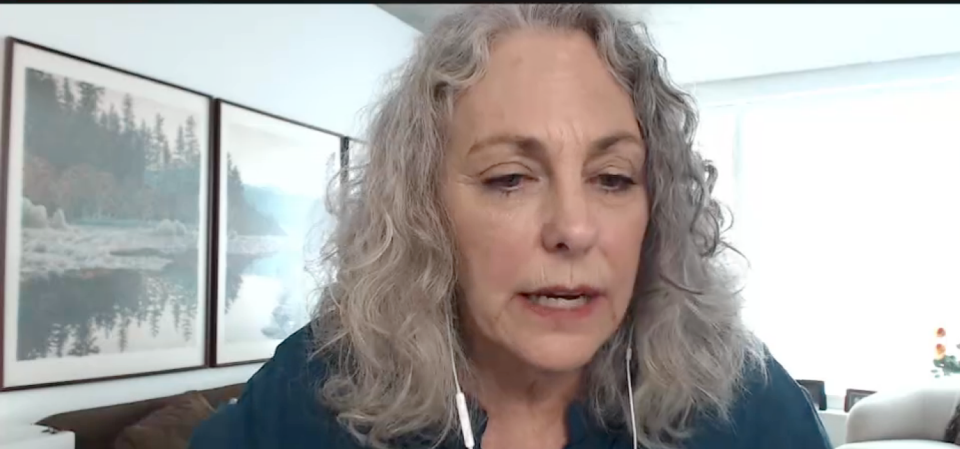
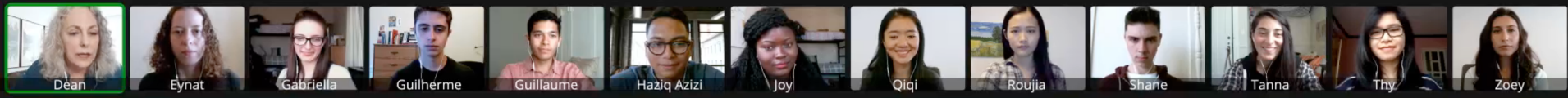
fundamental knowledge that promotes broad adaptive behavior

e.g., Cost-benefit analyses, Best Alternatives to a Negotiated Agreement (BATNAs), principles of multimodal perception that affect design (including of presentations)



**Attending class
outside
the lecture hall.**

personal interaction
advanced tools
deep mental processing
continuous engagement



VIEW ROOM

Main Classroom

FILTER EVENTS

- Spoken Comments
Longer than: 5 seconds
- Typed Comments
Longer than: 12 words
- Raised Hands
- Bookmarked Moments
- Emotive Moments

- Guillaume spoke (7 seconds) 2:52
- Guillaume spoke (18 seconds) 14:16
- Guillaume typed a comment: "I agree with that point but it should not be the first step to solving the problem," 14:38
- You bookmarked this: "Assess the prev. comment" 14:50
- Guillaume raised his hand 35:41

ASSESS THIS MOMENT

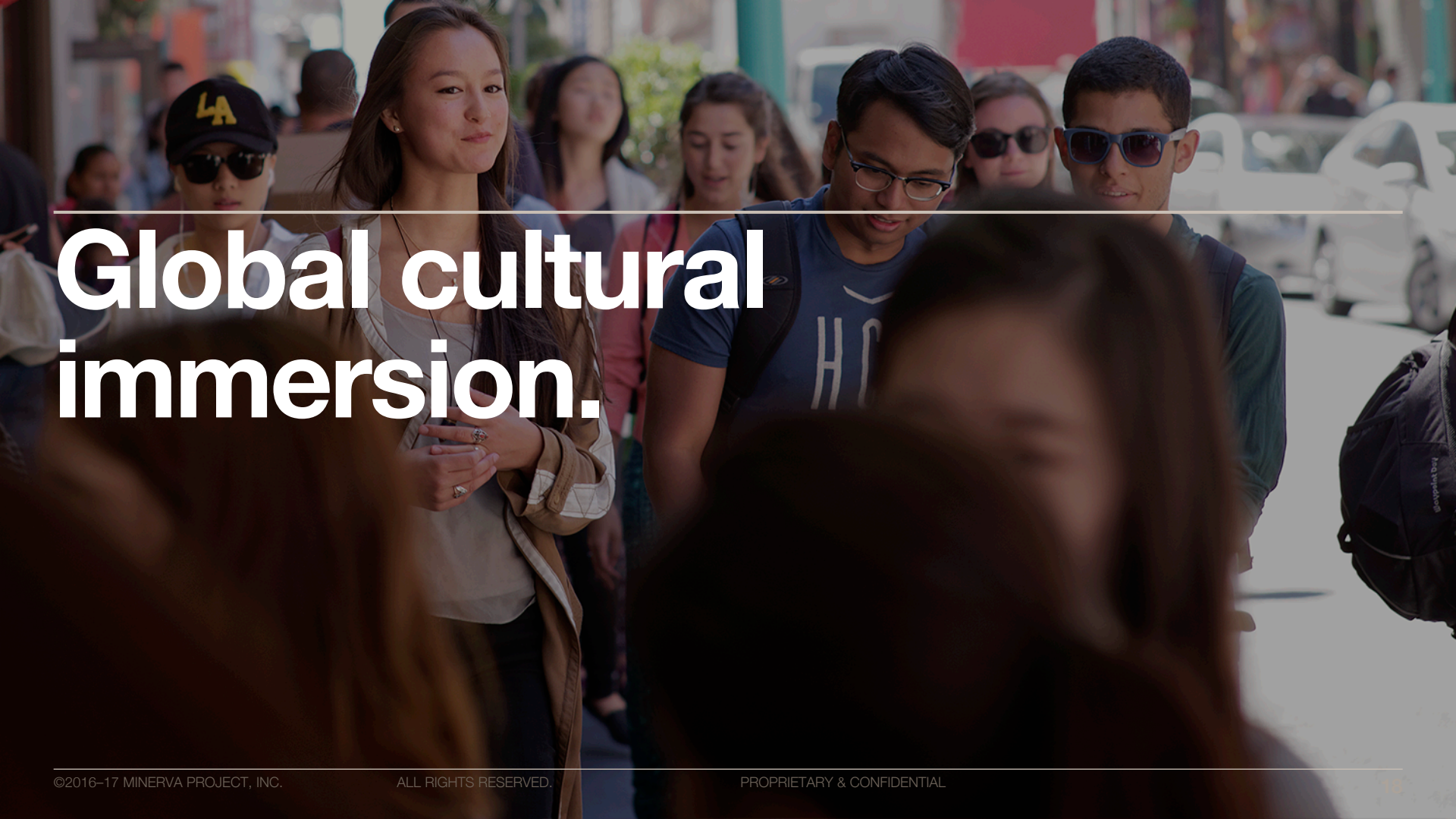
Guillaume - Spoken - 18 Seconds

I'm really impressed by what you said at this point. It shows real understanding of the HC that we were focusing on today.

#rightproblem - Characterize the nature of the problem.

Assess against rubric

- 1 Unsatisfactory**
Does not demonstrate consideration of problem characterization.
- 2 Barely Adequate**
Attempts to characterize the problem, *BUT* either: (a) does not provide an accurate explanation of the problem; or (b) does not accurately identify the goals, obstacles, or size of the problem.
- 3 Adequate**
When prompted: (a) accurately characterizes the problem; (b) accurately identifies the goals, obstacles, and the size of the problem; or (c) accurately recognizes when a problem-solving approach is not applied correctly.
- 4 Good**
Without being prompted, in a context that demonstrates near transfer: (a) accurately characterizes the problem; (b) accurately identifies the goals, obstacles, and the size of the problem; or (c) accurately recognizes when a problem-solving approach is not applied correctly.
- 5 Excellent**
Without being prompted, in a context that demonstrates far transfer: (a) accurately characterizes the problem; (b) accurately identifies the goals, obstacles, and the size of the problem; or (c) accurately recognizes when a problem-solving approach is not applied correctly. *OR* When stuck, reframes a problem in a way that enables moving forward.



Global cultural immersion.



7 cities

during 4 years of rigorous study

San Francisco

Berlin

Buenos Aires

Seoul

Bangalore

London

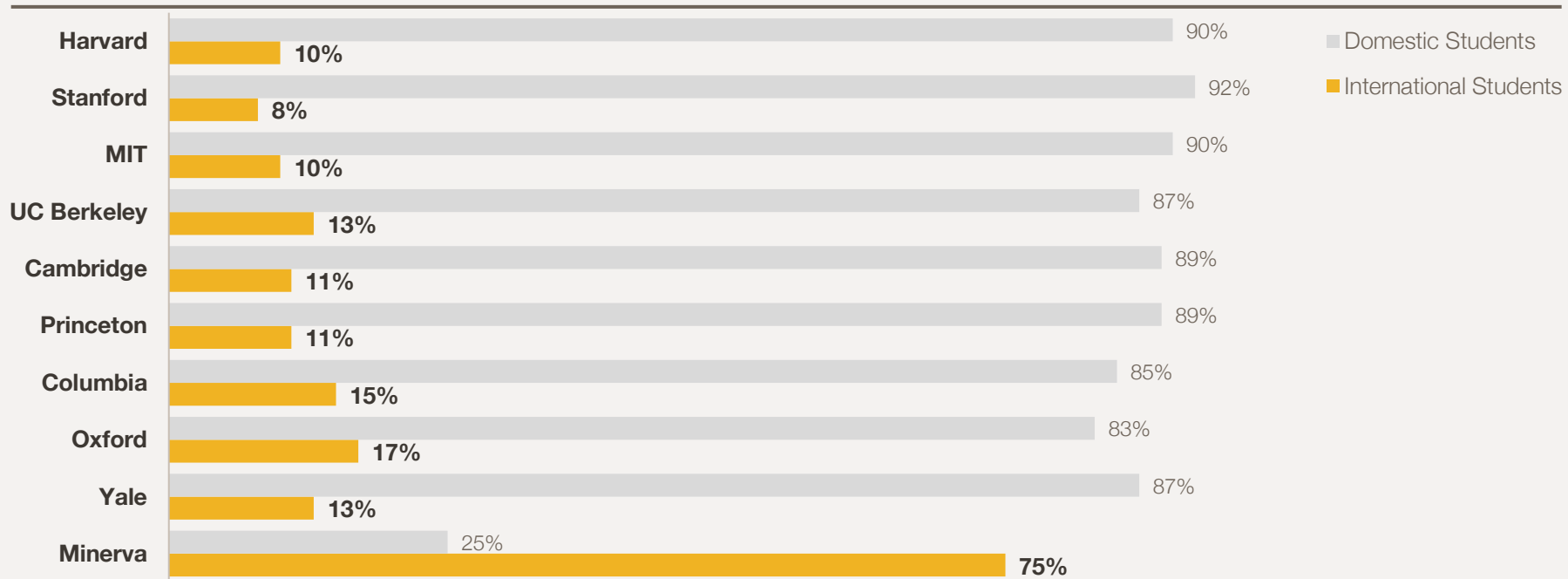
Location Pending*

Image: Data visualization showing global flight patterns by Michael Markieta



Collaborating with top students from around the world.

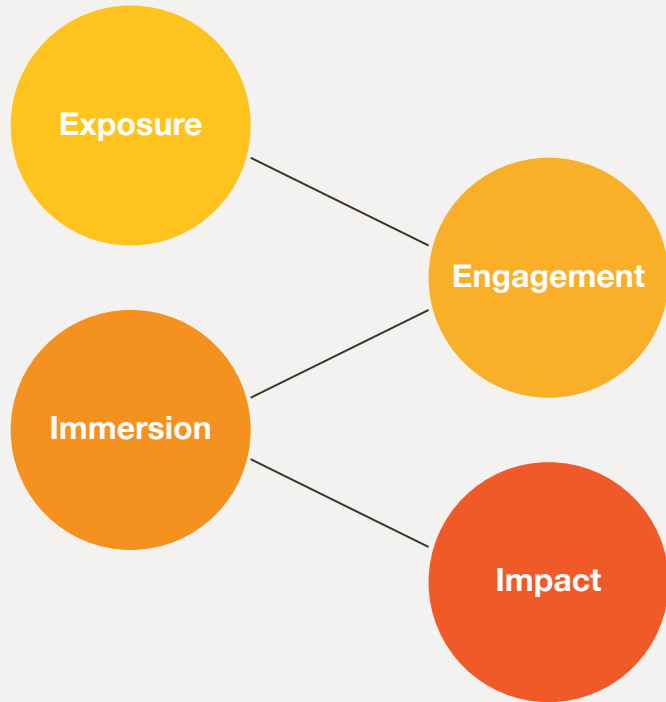
International Students at Top Universities



Source: Academic Ranking of World Universities at <http://www.shanghairanking.com>

A photograph of two students, a male and a female, working together on a small robot in a classroom or workshop. The male student is on the left, wearing a blue shirt, and the female student is on the right, wearing a white shirt. They are both looking down at the robot, which is on a desk. The desk is cluttered with various items, including a water bottle, a keyboard, and some papers. The text "Applying and mastering new skills in real situations." is overlaid on the image in a large, white, sans-serif font. A thin white horizontal line is positioned above the text.

**Applying and
mastering new
skills
in real situations.**



Exposure

Introduces students to new people, places, and perspectives relevant to each city

Engagement

Stimulates deeper inquiry, exploration, and discussion of specific issues in a collaborative context

Immersion

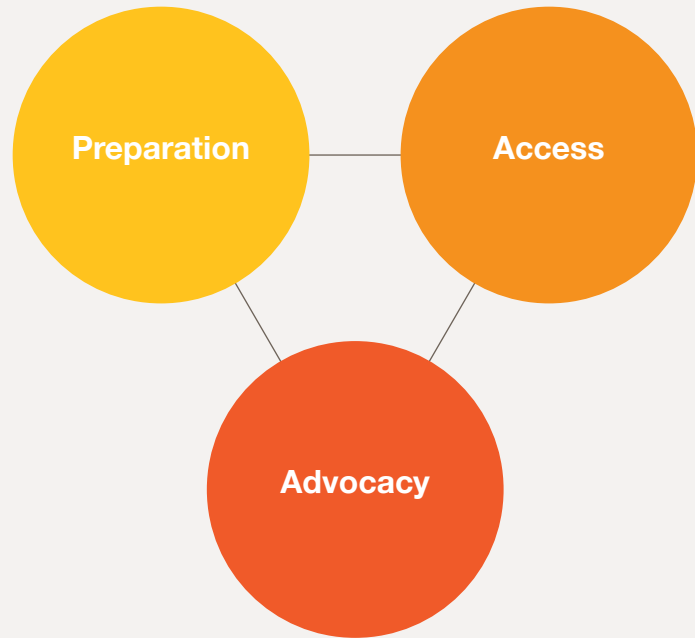
Entails recurring involvement with a project, initiative, or organization to facilitate reflection and deepen understanding of pertinent issues

Impact

Requires sustained participation by applying practical knowledge to novel situations, in order to develop and propose realistic solutions to specific problems



Accelerated career trajectory.



Preparation

Personalized Coaching and Training

Access

Networking, Placement, and Recruiting

Advocacy

Ongoing Publicity and Promotion

“Future-proofing” career

The Master of Science in Decision Analysis blends key elements of MBA and Master of Data Science curriculum: **data analytics with business decision making.**



Thanks!

Marianna Mirchuk
Regional Director, the Americas
Marianna@minerva.kgi.edu



MINERVA[®]